

हमारा विश्वास... हर एक विद्यार्थी है खास

**JEE
MAIN
Sept.
2020**

QUESTION PAPER WITH SOLUTION

PHYSICS _ 5 Sep. _ SHIFT - 2



MOTION™

H.O. : 394, Rajeev Gandhi Nagar, Kota
www.motion.ac.in | ✉: info@motion.ac.in

हमारा विश्वास... हर एक विद्यार्थी है खास

1. A ring is hung on a nail. It can oscillate, without slipping or sliding (i) in its plane with a time period T_1 and, (ii) back and forth in a direction perpendicular to its plane, with a period T_2 . The ratio $\frac{T_1}{T_2}$ will be:

- (1) $\frac{3}{\sqrt{2}}$ (2) $\frac{\sqrt{2}}{3}$ (3) $\frac{2}{\sqrt{3}}$ (4) $\frac{2}{3}$

Sol. 3

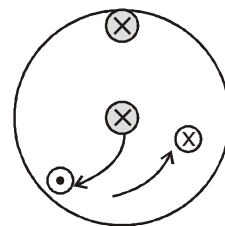
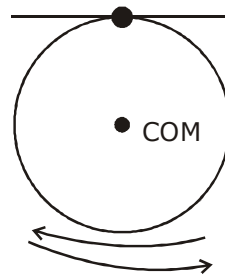
$$T_1 = 2\pi \sqrt{\frac{(mR^2 + mR^2)}{mgR}}$$

$$T_1 = 2\pi \sqrt{\frac{2R}{g}}$$

$$T_2 = 2\pi \sqrt{\frac{I}{mgL_{cm}}}$$

$$T_2 = 2\pi \sqrt{\frac{3mR^2/2}{mgR}} = 2\pi \sqrt{\frac{3R}{2g}}$$

$$\frac{T_1}{T_2} = \sqrt{\frac{4}{3}} = \frac{2}{\sqrt{3}}$$



Back and forth

2. The correct match between the entries in column I and column II are:

I

Radiation

- (a) Microwave
(b) Gamma rays
(c) A.M. radio waves
(d) X-rays

- (1) (a) - (ii), (b)-(i), (c)-(iv), (d)-(iii)
(3) (a)-(iv), (b)-(ii), (c)-(i), (d)-(iii)

II

Wavelength

- (i) 100 m
(ii) 10^{-15} m
(iii) 10^{-10} m
(iv) 10^{-3} m

- (2) (a)-(iii), (b)-(ii), (c)-(i), (d)-(iv)
(4) (a)-(i), (b)-(iii), (c)-(iv), (d)-(ii)

Sol. 3

By theory

3. In an experiment to verify Stokes law, a small spherical ball of radius r and density ρ falls under gravity through a distance h in air before entering a tank of water. If the terminal velocity of the ball inside water is same as its velocity just before entering the water surface, then the value of h is proportional to : (ignore viscosity of air)
- (1) r^4 (2) r (3) r^3 (4) r^2

CRASH COURSE
FOR JEE ADVANCED 2020

FREE Online Lectures Available on YouTube

Go Premium at ₹ 1100

- ◆ Doubt Support ◆ Advanced Level Test Access
- ◆ Live Test Paper Discussion ◆ Final Revision Exercises

Start Date: **07 Sept. 2020**

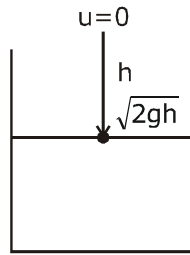
Sol. 1

$$V_T = \sqrt{2gh}$$

$$\frac{2}{9} r^2 \frac{(\rho_b - \rho_l)g}{\eta} = \sqrt{2gh}$$

$$r^2 \propto \sqrt{h} \Rightarrow r^4 \propto h$$

$$h \propto r^4$$



4. Ten charges are placed on the circumference of a circle of radius R with constant angular separation between successive charges. Alternate charges 1, 3, 5, 7, 9 have charge $(+q)$ each, while 2, 4, 6, 8, 10 have charge $(-q)$ each. The potential V and the electric field E at the centre of the circle are respectively: (Take $V = 0$ at infinity)

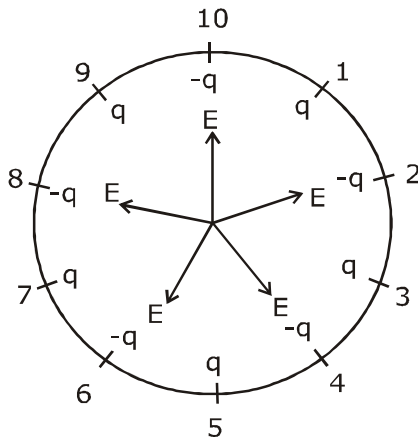
(1) $V = 0; E = 0$

(2) $V = \frac{10q}{4\pi\epsilon_0 R}; E = \frac{10q}{4\pi\epsilon_0 R^2}$

(3) $V = 0; E = \frac{10q}{4\pi\epsilon_0 R^2}$

(4) $V = \frac{10q}{4\pi\epsilon_0 R}; E = 0$

Sol. 1



$$V_{\text{net}} = 5 \left(\frac{kq}{R} \right) + \left(\frac{5k(-q)}{R} \right)$$

$$V_{\text{net}} = 0 [Q_{\text{net}} = 0]$$

$$E_{\text{net}} = 0 \text{ by symmetry}$$

CRASH COURSE
FOR JEE ADVANCED 2020

FREE Online Lectures Available on YouTube

Go Premium at ₹ 1100

- ◆ Doubt Support
- ◆ Advanced Level Test Access
- ◆ Live Test Paper Discussion
- ◆ Final Revision Exercises

Start Date: **07 Sept. 2020**

हमारा विश्वास... हर एक विद्यार्थी है खास

5. A spaceship in space sweeps stationary interplanetary dust. As a result, its mass increases at a rate $\frac{dM(t)}{dt} = bv^2(t)$, where $v(t)$ is its instantaneous velocity. The instantaneous acceleration of the satellite is :

(1) $-bv^3(t)$ (2) $-\frac{bv^3}{M(t)}$ (3) $-\frac{2bv^3}{M(t)}$ (4) $-\frac{bv^3}{2M(t)}$

Sol. 2

$$\frac{dM(t)}{dt} = -bv^2$$

in free space
no external force
so there is only thrust force on rocket

$$f_{in} = \frac{dM}{dt} (V_{rel})$$

$$Ma = \left(\frac{-bv^2}{(t)} \right) v$$

$$a = \frac{-bv^3}{M(t)}$$

6. Two different wires having lengths L_1 and L_2 , and respective temperature coefficient of linear expansion α_1 and α_2 , are joined end-to-end. Then the effective temperature coefficient of linear expansion is:

(1) $\frac{\alpha_1 L_1 + \alpha_2 L_2}{L_1 + L_2}$ (2) $2\sqrt{\alpha_1 \alpha_2}$

(3) $4 \frac{\alpha_1 \alpha_2}{\alpha_1 + \alpha_2} \frac{L_2 L_1}{(L_2 + L_1)^2}$ (4) $\frac{\alpha_1 + \alpha_2}{2}$

Sol. 1

$$L'_1 = L_1 (1 + \alpha_1 \Delta T)$$

$$L'_2 = L_2 (1 + \alpha_2 \Delta T)$$

$$L' + L'_2 = L_1 + L_2 + L_1 \alpha_1 \Delta T + L_2 \alpha_2 \Delta T$$

$$= (L_1 + L_2) \left[1 + \left[\frac{L_1 \alpha_1 + L_2 \alpha_2}{L_1 + L_2} \right] \Delta T \right]$$

$$= (L_1 + L_2) [1 + \alpha_{eq} \Delta T]$$

$$\text{So, } \alpha_{eq} = \frac{L_1 \alpha_1 + L_2 \alpha_2}{L_1 + L_2}$$

CRASH COURSE
FOR JEE ADVANCED 2020

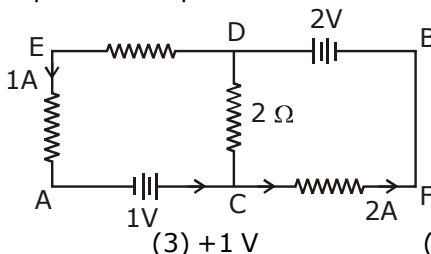
FREE Online Lectures Available on 

Go Premium at ₹ 1100

◆ Doubt Support ◆ Advanced Level Test Access
◆ Live Test Paper Discussion ◆ Final Revision Exercises

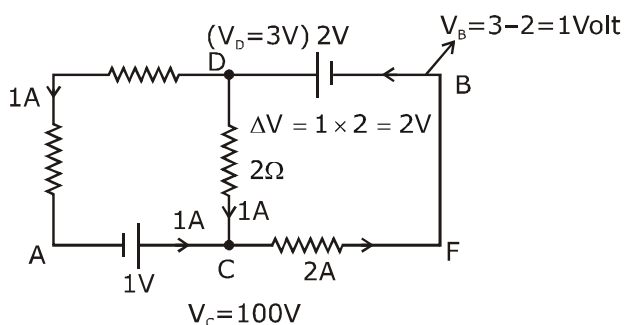
Start Date: **07 Sept. 2020**

7. In the circuit, given in the figure currents in different branches and value of one resistor are shown. Then potential at point B with respect to the point A is:



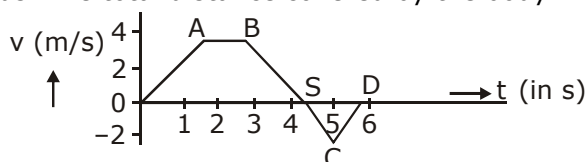
- (1) +2 V (2) -2 V (3) +1 V (4) -1 V

Sol. 3



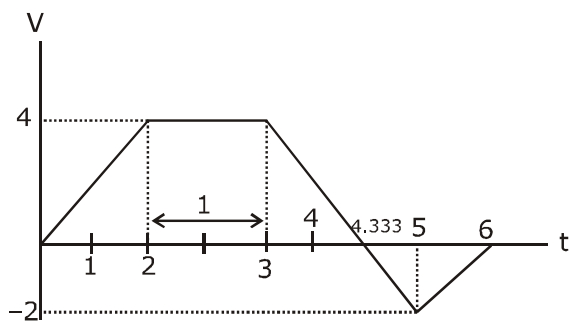
Let $V_A = 0$
 $V_B - V_A = 1 - 0$
 $= 1 \text{ volt}$

8. The velocity (v) and time (t) graph of a body in a straight line motion is shown in the figure. The point S is at 4.333 seconds. The total distance covered by the body in 6 s is:



- (1) $\frac{37}{3}$ m (2) $\frac{49}{4}$ m (3) 12 m (4) 11 m

Sol. 1

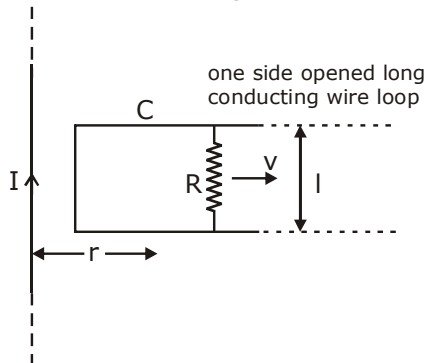


हमारा विश्वास... हर एक विद्यार्थी है खास

distance = area under graph

$$\begin{aligned}
 &= \frac{1}{2} (4) \left(\frac{13}{3} + 1 \right) + \left[\frac{1}{2} \left(6 - \frac{13}{3} \right) \times 2 \right] \\
 &= 2 \times \frac{16}{3} + \frac{5}{3} \\
 &= \frac{32}{3} + \frac{5}{3} = \frac{37}{3} \text{ m}
 \end{aligned}$$

9. An infinitely long straight wire carrying current I , one side opened rectangular loop and a conductor C with a sliding connector are located in the same plane, as shown in the figure. The connector has length l and resistance R . It slides to the right with a velocity v . The resistance of the conductor and the self inductance of the loop are negligible. The induced current in the loop, as a function of separation r , between the connector and the straight wire is:



(1) $\frac{\mu_0 I v l}{2\pi R r}$

(2) $\frac{\mu_0 I v l}{\pi R r}$

(3) $\frac{2\mu_0 I v l}{\pi R r}$

(4) $\frac{\mu_0 I v l}{4\pi R r}$

Sol. 1

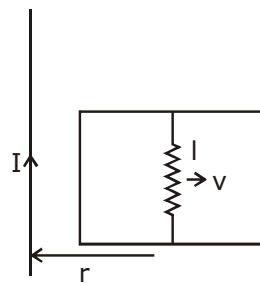
$$B = \left(\frac{\mu_0 I}{2\pi r} \right)$$

induced emf
 $e = Bv l$

$$= \frac{\mu_0 I}{2\pi r} v l$$

$$= \frac{\mu_0 I v l}{2\pi r}$$

$$\text{induced current } i = \frac{e}{R} = \frac{\mu_0 I v l}{2\pi r R}$$



CRASH COURSE
FOR JEE ADVANCED 2020

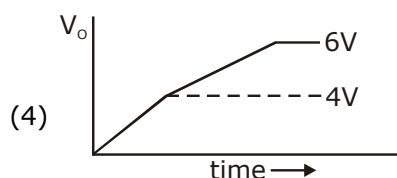
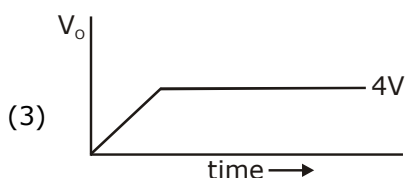
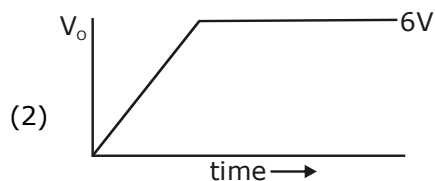
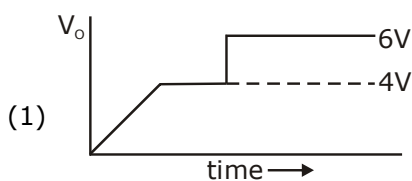
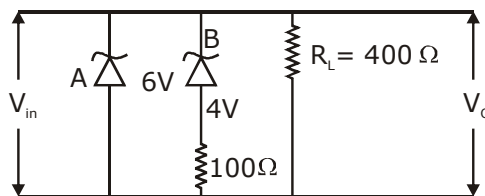
FREE Online Lectures Available on **YouTube**

Go Premium at ₹ 1100

◆ Doubt Support ◆ Advanced Level Test Access
 ◆ Live Test Paper Discussion ◆ Final Revision Exercises

Start Date: **07 Sept. 2020**

10. Two zener diodes (A and B) having breakdown voltages of 6 V and 4 V respectively, are connected as shown in the circuit below. The output voltage V_o variation with input voltage linearly increasing with time, is given by: ($V_{input} = 0$ V at $t = 0$) (figures are qualitative)



Sol.

(4)

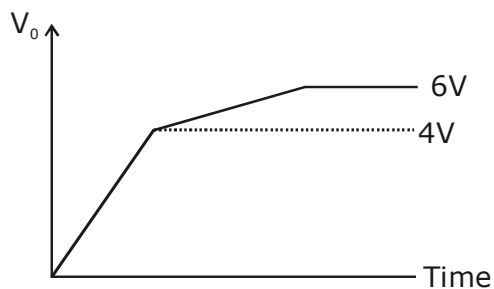
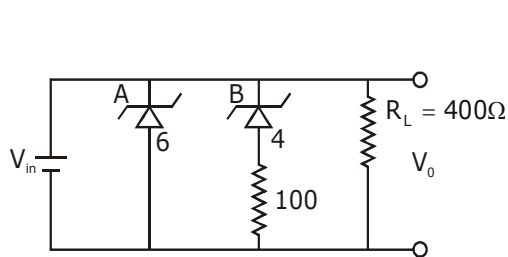
$t = 0$

$V_i = 0$

$V_i \propto t$

Given

\therefore Zener diode maintain constant breakdown voltage.



CRASH COURSE
FOR JEE ADVANCED 2020

FREE Online Lectures Available on YouTube

Go Premium at ₹ 1100

◆ Doubt Support ◆ Advanced Level Test Access
◆ Live Test Paper Discussion ◆ Final Revision Exercises

Start Date: 07 Sept. 2020

हमारा विश्वास... हर एक विद्यार्थी है खास

- 11.** In an adiabatic process, the density of a diatomic gas becomes 32 times its initial value. The final pressure of the gas is found to be n times the initial pressure. The value of n is:

- (1) 32 (2) $\frac{1}{32}$ (3) 326 (4) 128

Sol. 4

$$PV^r = \text{const.}$$

$$p(\rho^{-r}) = \text{const.}$$

$$P_1 \rho_1^{-r} = P_2 \rho_2^{-r} \quad r = \frac{7}{5} \text{ for diatomic}$$

$$P_0 \rho_0^{-7/5} = (n P_0) (32 \rho_0)^{-7/5}$$

$$\rho_0^{-7/5} = \frac{n}{(32)^{7/5}} (\rho_0^{-7/5})$$

$$n = (2^5)^{7/5} = 2^7 = 128$$

- 12.** A galvanometer is used in laboratory for detecting the null point in electrical experiments. If, on passing a current of 6 mA it produces a deflection of 2° , its figure of merit is close to:

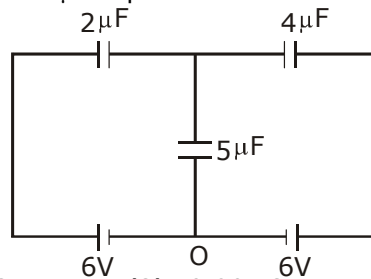
- (1) 6×10^{-3} A/div. (2) 3×10^{-3} A/div. (3) 666° A/div. (4) 333° A/div.

Sol. 2

$$\text{figure of merit} = \frac{I}{\theta} \Rightarrow \text{A/div.}$$

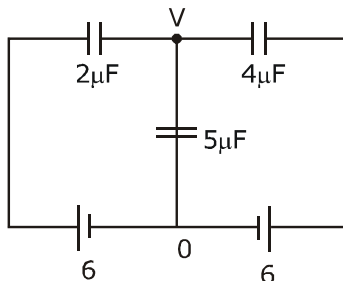
$$= \frac{6 \times 10^{-3}}{2} = 3 \times 10^{-3} \text{ A/div.}$$

- 13.** In the circuit shown, charge on the $5 \mu\text{F}$ capacitor is:



- (1) $5.45 \mu\text{C}$ (2) $18.00 \mu\text{C}$ (3) $10.90 \mu\text{C}$ (4) $16.36 \mu\text{C}$

Sol. 2



CRASH COURSE
FOR JEE ADVANCED 2020

FREE Online Lectures Available on YouTube

Go Premium at ₹ 1100

- ◆ Doubt Support
- ◆ Advanced Level Test Access
- ◆ Live Test Paper Discussion
- ◆ Final Revision Exercises

Start Date: **07 Sept. 2020**

$$(V - 6) \times 2 + (V - 0) \times 5 + (V - 6) \times 4 = 0$$

$$2V - 12 + 5V + 4V - 24 = 0$$

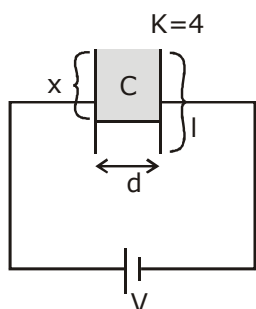
$$11V = 36$$

$$V = \frac{36}{11}$$

$$q = CV = 5 \times \frac{36}{11} \approx 18.00 \mu\text{C}$$

14. A parallel plate capacitor has plate of length 'l', width 'w' and separation of plates is 'd'. It is connected to a battery of emf V. A dielectric slab of the same thickness 'd' and of dielectric constant $k=4$ is being inserted between the plates of the capacitor. At what length of the slab inside plates, will the energy stored in the capacitor be two times the initial energy stored?
- (1) $2l/3$ (2) $l/2$ (3) $l/4$ (4) $l/3$

Sol. 4

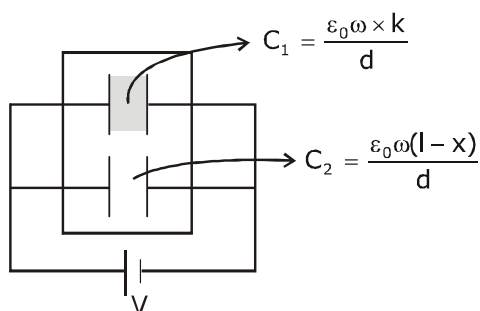


area of plate = lw

$$C = \frac{\epsilon_0 A}{d} = \frac{\epsilon_0 l w}{d}$$

$$U_1 = \frac{1}{2} C V^2 = \frac{1}{2} \frac{\epsilon_0 l w}{d} V^2$$

$$C_{eq} = C_1 + C_2$$



CRASH COURSE
FOR JEE ADVANCED 2020

FREE Online Lectures Available on YouTube

Go Premium at ₹ 1100

◆ Doubt Support ◆ Advanced Level Test Access
◆ Live Test Paper Discussion ◆ Final Revision Exercises

Start Date: 07 Sept. 2020

हमारा विश्वास... हर एक विद्यार्थी है खास

$$C_{eq} = \frac{\epsilon_0 \omega x k}{d} + \frac{\epsilon_0 \omega (l-x)}{d}$$

$$C_{eq} = \frac{\epsilon_0 \omega}{d} [kx + l - x]$$

$$U_f = \frac{1}{2} C_{eq} V^2$$

$$U_f = 2U_i \Rightarrow \frac{1}{2} \frac{\epsilon_0 \omega}{d} [kx + l - x] v^2 = 2 \times \frac{1}{2} \frac{\epsilon_0 l \omega}{d} v^2$$

$$kx + l - x = 2l$$

$$4x - x = l$$

$$3x = l$$

$$x = \frac{l}{3}$$

- 15.** A radioactive nucleus decays by two different processes. The half life for the first process is 10 s and that for the second is 100 s. The effective half life of the nucleus is close to:

(1) 55 sec. (2) 6 sec. (3) 12 sec. (4) 9 sec.

Sol. 4

$$T_1 = 10 \text{ sec} \quad \lambda_1 = \frac{\ln 2}{T_1}$$

$$T_2 = 100 \text{ s}, \lambda_2 = \frac{\ln 2}{T_2}, \lambda_{eq} = \frac{\ln 2}{T_{eq}}$$

we know

$$\lambda_{eq} = \lambda_1 + \lambda_2$$

$$\frac{\ln 2}{T_{eq}} = \frac{\ln 2}{T_1} + \frac{\ln 2}{T_2}$$

$$\frac{1}{T_{eq}} = \frac{1}{10} + \frac{1}{100} = \frac{10+1}{100} = \frac{11}{100}$$

$$T_{eq} = \frac{100}{11} = 9 \text{ s}$$

- 16.** A driver in a car, approaching a vertical wall notices that the frequency of his car horn, has changed from 440 Hz to 480 Hz, when it gets reflected from the wall. If the speed of sound in air is 345 m/s, then the speed of the car is:

(1) 24 km/hr (2) 36 km/hr (3) 54 km/hr (4) 18 km/hr

CRASH COURSE
FOR JEE ADVANCED 2020

FREE Online Lectures Available on  YouTube

Go Premium at ₹ 1100

◆ Doubt Support ◆ Advanced Level Test Access
◆ Live Test Paper Discussion ◆ Final Revision Exercises

Start Date: **07 Sept. 2020**

Sol. 3
car towards

$$f_1 = \left(\frac{v-0}{v-v_c} \right) f_0 \quad \dots(i)$$

$$480 = \left(\frac{v+v_c}{v-0} \right) f_i \Rightarrow \left(\frac{v+v_c}{v} \right) \left(\frac{v}{v-v_c} \right) f_0$$

$$480 = (350 + v_c) \times \left(\frac{440}{350 - v_c} \right)$$

$$12 = \left(\frac{350 + v_c}{350 - v_c} \right) \times 11$$

$$12 \times 350 - 12 \times v_c = 350 \times 11 + 11 v_c$$

$$23v_c = 4200 - 3850 = 350$$

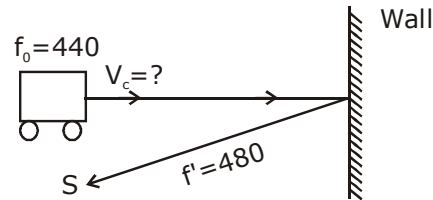
$$v_c = \frac{350}{23} \text{ m}$$

$$v_c = \frac{350}{23} \times \frac{18}{5} \text{ km/h}$$

$$= \frac{70 \times 18}{23}$$

$$= 54.78$$

$$= 54 \text{ km/hr}$$



17. An iron rod of volume 10^{-3} m^3 and relative permeability 1000 is placed as core in a solenoid with 10 turns/cm. If a current of 0.5 A is passed through the solenoid, then the magnetic moment of the rod will be:

- (1) $0.5 \times 10^2 \text{ Am}^2$ (2) $50 \times 10^2 \text{ Am}^2$ (3) $5 \times 10^2 \text{ Am}^2$ (4) $500 \times 10^2 \text{ Am}^2$

Sol. 3

$$\text{magnetic moment } \vec{M} = NIA(\mu_r - 1)$$

$$n = 10 \text{ turns/cm} \quad = (nl) IA (\mu_r - 1)$$

$$= \frac{10}{10^{-2}} \text{ turn/m} \quad = nI (Al) (\mu_r - 1)$$

$$= 1000 \text{ turn/m} \quad = 1000 \times 0.5 \times 10^{-3} (1000 - 1)$$

$$V = 10^{-3} \text{ m}^3 = Al \quad = 0.5 \times (999) = 499.5$$

$$I = 0.5 \text{ A}, \mu_r \quad = 500$$

$$N = nl \quad = 5 \times 10^2$$

CRASH COURSE
FOR JEE ADVANCED 2020

FREE Online Lectures Available on **YouTube**

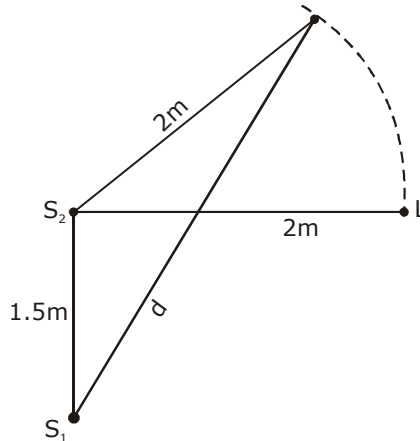
Go Premium at ₹ 1100

- ◆ Doubt Support ◆ Advanced Level Test Access
- ◆ Live Test Paper Discussion ◆ Final Revision Exercises

Start Date: **07 Sept. 2020**

हमारा विश्वास... हर एक विद्यार्थी है खास

- 18.** Two coherent sources of sound, S_1 and S_2 , produce sound waves of the same wavelength, $\lambda = 1$ m, in phase. S_1 and S_2 are placed 1.5 m apart (see fig). A listener, located at L, directly in front of S_2 finds that the intensity is at a minimum when he is 2 m away from S_2 . The listener moves away from S_1 , keeping his distance from S_2 fixed. The adjacent maximum of intensity is observed when the listener is at a distance d from S_1 . Then, d is :



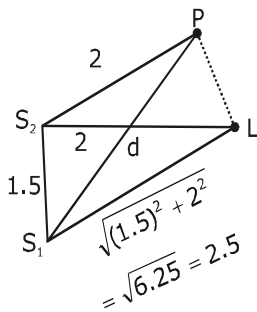
(1) 12 m

(2) 2 m

(3) 3 m

(4) 5 m

Sol. **3**



For min at (L)

$$S_1L - S_2L = \Delta x = \frac{\lambda}{2} (2n + 1); (n = 0, 1, 2)$$

$$2.5 - 2 = \frac{1}{2} (2n + 1)$$

$$0.5 \times 2 = (2n + 1)$$

$$2n = 0$$

$$n = 0 \text{ (first minima)}$$

so at 'p' \rightarrow first maxima

$$S_1P - S_2P = \lambda \quad [n = 1] \text{ for first maxima}$$

$$S_1P - 2 = 1$$

$$S_1P = 1 + 2$$

$$d = 3 \text{ m}$$

CRASH COURSE
FOR JEE ADVANCED 2020

FREE Online Lectures Available on YouTube

Go Premium at ₹ 1100

◆ Doubt Support ◆ Advanced Level Test Access
◆ Live Test Paper Discussion ◆ Final Revision Exercises

Start Date: **07 Sept. 2020**

19. The quantities $x = \frac{1}{\sqrt{\mu_0 \epsilon_0}}$, $y = \frac{E}{B}$ and $z = \frac{l}{CR}$ are defined where C-capacitance, R-Resistance, l-length, E-Electric field, B-magnetic field and ϵ_0, μ_0 -free space permittivity and permeability respectively. Then:

- (1) Only y and z have the same dimension (2) x, y and z have the same dimension
 (3) Only x and y have the same dimension (4) Only x and z have the same dimension

Sol. 2

$$x = \frac{1}{\sqrt{\epsilon_0 \mu_0}} = (\text{speed})$$

$$[x] = LT^{-1} \quad y = \frac{E}{B} = \text{speed}$$

$$Z = \frac{l}{CR} = \frac{m}{\text{sec}} = m/s \quad [y] = LT^{-1}$$

$$[RC = T]$$

$$[Z] = LT^{-1}$$

So, x,y,z has same dimension

20. The acceleration due to gravity on the earth's surface at the poles is g and angular velocity of the earth about the axis passing through the pole is ω . An object is weighed at the equator and at a height h above the poles by using a spring balance. If the weights are found to be same, then h is : ($h \ll R$, where R is the radius of the earth)

- (1) $\frac{R^2 \omega^2}{g}$ (2) $\frac{R^2 \omega^2}{8g}$ (3) $\frac{R^2 \omega^2}{4g}$ (4) $\frac{R^2 \omega^2}{2g}$

Sol. 4

\therefore weight same at poles and at h (so $g_1 = g_2$)

$$g_1 = g - R\omega^2$$

$$g_2 = g \left(1 - \frac{2h}{R}\right)$$

$$\therefore g_1 = g_2$$

$$g - R\omega^2 = g \left(1 - \frac{2h}{R}\right) \Rightarrow g - \frac{2gh}{R}$$

$$R\omega^2 = \frac{2gh}{R}$$

$$h = \frac{R^2 \omega^2}{2g}$$

CRASH COURSE
FOR JEE ADVANCED 2020

FREE Online Lectures Available on  YouTube

Go Premium at ₹ 1100

- ◆ Doubt Support ◆ Advanced Level Test Access
- ◆ Live Test Paper Discussion ◆ Final Revision Exercises

Start Date: **07 Sept. 2020**

हमारा विश्वास... हर एक विद्यार्थी है खास

- 21.** Nitrogen gas is at 300° C temperature. The temperature (in K) at which the rms speed of a H₂ molecule would be equal to the rms speed of a nitrogen molecule, is _____.
(Molar mass of N₂ gas 28 g).

Sol. 41

$$V_{\text{rms}} = \sqrt{\frac{3RT}{m}}$$

$$V_{\text{N}_2} = \sqrt{\frac{3R(573)}{28}}$$

$$V_{\text{H}_2} = \sqrt{\frac{3RT}{2}}$$

$$V_{\text{H}_2} = V_{\text{N}_2}$$

$$\sqrt{\frac{3RT}{2}} = \sqrt{\frac{3R(573)}{28}}$$

$$\frac{T}{2} = \frac{573}{28}$$

$$T = 41 \text{ K}$$

- 22.** The surface of a metal is illuminated alternately with photons of energies E₁ = 4 eV and E₂ = 2.5 eV respectively. The ratio of maximum speeds of the photoelectrons emitted in the two cases is 2. The work function of the metal in (eV) is _____.

Sol. 2

$$\frac{\frac{1}{2}mV_1^2}{\frac{1}{2}mV_2^2} = \frac{E_1 - \phi_0}{E_2 - \phi_0} = \frac{4 - \phi_0}{2.5 - \phi_0}$$

$$\left(\frac{V_1}{V_2}\right)^2 = \frac{4 - \phi_0}{2.5 - \phi_0}$$

$$(2)^2 = \frac{4 - \phi_0}{2.5 - \phi_0}$$

$$10 - 4\phi_0 = 4 - \phi_0$$

$$3\phi_0 = 10 - 4 = 6$$

$$\phi_0 = 2\text{eV}$$

- 23.** A prism of angle A= 1° has a refractive index μ = 1.5. A good estimate for the minimum angle of deviation (in degrees) is close to N/10. Value of N is

CRASH COURSE
FOR JEE ADVANCED 2020

FREE Online Lectures Available on  YouTube

Go Premium at ₹ 1100

◆ Doubt Support ◆ Advanced Level Test Access
◆ Live Test Paper Discussion ◆ Final Revision Exercises

Start Date: **07 Sept. 2020**

Sol. 5

$$\begin{aligned} A &= 1^\circ \\ \delta &= (\mu - 1) A \\ &= (1.5 - 1) A \\ &= 0.5 \times 1 \\ &= \frac{5}{10} = \frac{N}{10} \text{ so } N = 5 \end{aligned}$$

24. A body of mass 2 kg is driven by an engine delivering a constant power of 1 J/s. The body starts from rest and moves in a straight line. After 9 seconds, the body has moved a distance (in m)

Sol. 18

$$P = Fv = mav$$

$$a = \frac{p}{mv}$$

$$\frac{dv}{dt} = \frac{p}{mv}$$

$$\int_0^u v dv = \frac{p}{m} \int_0^t dt$$

$$\frac{u^2}{2} = \frac{p}{m} t$$

$$u = \sqrt{\frac{2p}{m}} \sqrt{t}$$

$$\frac{dx}{dt} = \sqrt{\frac{2p}{m}} \sqrt{t}$$

$$\int_0^x dx = \sqrt{\frac{2p}{m}} \int_0^9 \sqrt{t} dt$$

$$x = \frac{2}{3} \left[(9)^{3/2} \right]$$

$$= \frac{2}{3} \times 27$$

$$x = 18$$

II-method

$$Pt = w = \frac{1}{2} mv^2 - 0$$

$$1 \times t = \frac{1}{2} \times 2 \times u^2$$

CRASH COURSE
FOR JEE ADVANCED 2020

FREE Online Lectures Available on  YouTube

Go Premium at ₹ 1100

◆ Doubt Support ◆ Advanced Level Test Access
◆ Live Test Paper Discussion ◆ Final Revision Exercises

Start Date: **07 Sept. 2020**

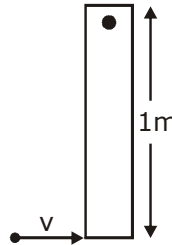
हमारा विश्वास... हर एक विद्यार्थी है खास

$$u = \sqrt{t}$$

$$\frac{dx}{dt} = \sqrt{t} = \int_0^1 dx = \int_0^9 \sqrt{t} dt$$

$$x = \frac{[t^{3/2}]_0^9}{\frac{3}{2}} = 18 \text{ m}$$

- 25.** A thin rod of mass 0.9 kg and length 1 m is suspended, at rest, from one end so that it can freely oscillate in the vertical plane. A particle of mass 0.1 kg moving in a straight line with velocity 80 m/s hits the rod at its bottom most point and sticks to it (see figure). The angular speed (in rad/s) of the rod immediately after the collision will be _____.



Sol. **20**

$$L_i = L_f$$

$$0.1 \times 80 \times 1 = \frac{0.9 \times 1^2}{3} \times \omega + (0.1) 1^2 \omega$$

$$8 = (0.3 + 0.1) \omega$$

$$8 = (0.4) \omega$$

$$\omega = \frac{80}{4} = 20$$

CRASH COURSE
FOR JEE ADVANCED 2020

FREE Online Lectures Available on YouTube

Go Premium at ₹ 1100

◆ Doubt Support ◆ Advanced Level Test Access
◆ Live Test Paper Discussion ◆ Final Revision Exercises

Start Date: **07 Sept. 2020**

जब इन्होंने पूरा किया अपना सपना
तो आप भी पा सकते है लक्ष्य अपना

Admission
OPEN

JEE MAIN RESULT 2019



Nitin Gupta

Marks
335
13th (2019)

Marks
149
12th (2018)



Shiv Modi

Marks
318
13th (2019)

Marks
153
12th (2018)



Ritik Bansal

Marks
308
13th (2019)

Marks
218
12th (2018)



Shubham Kumar

Marks
300
13th (2019)

Marks
153
12th (2018)

KOTA'S PIONEER IN DIGITAL EDUCATION

1,95,00,000+ viewers | **72,67,900+** viewing hours | **2,11,000+** Subscribers

SERVICES	SILVER	GOLD	PLATINUM
Classroom Lectures (VOD)			
Live interaction	NA		
Doubt Support	NA		
Academic & Technical Support	NA		
Complete access to all content	NA		
Classroom Study Material	NA		
Exercise Sheets	NA		
Recorded Video Solutions	NA		
Online Test Series	NA		
Revision Material	NA		
Upgrade to Regular Classroom program	Chargeable	Chargeable	Free
Physical Classroom	NA	NA	
Computer Based Test	NA	NA	
Student Performance Report	NA	NA	
Workshop & Camp	NA	NA	
Motion Solution Lab- Supervised learning and instant doubt clearance	NA	NA	
Personalised guidance and mentoring	NA	NA	

FEE STRUCTURE

CLASS	SILVER	GOLD	PLATINUM
7th/8th	FREE	₹ 12,000	₹ 35,000
9th/10th	FREE	₹ 15,000	₹ 40,000
11th	FREE	₹ 29,999	₹ 49,999
12th	FREE	₹ 39,999	₹ 54,999
12th Pass	FREE	₹ 39,999	₹ 59,999

+ Student Kit will be provided at extra cost to Platinum Student.

- * **SILVER (Trial)** Only valid 7 DAYS or First 10 Hour's Lectures.
- ** **GOLD (Online)** can be converted to regular classroom (Any MOTION Center) by paying difference amount after lockdown.
- *** **PLATINUM (Online + Regular)** can be converted to regular classroom (Any MOTION Center) without any cost after lockdown.

New Batch Starting from :
16 & 23 September 2020

Zero Cost EMI Available

MOTION™

H.O. : 394, Rajeev Gandhi Nagar, Kota
www.motion.ac.in | ✉ : info@motion.ac.in